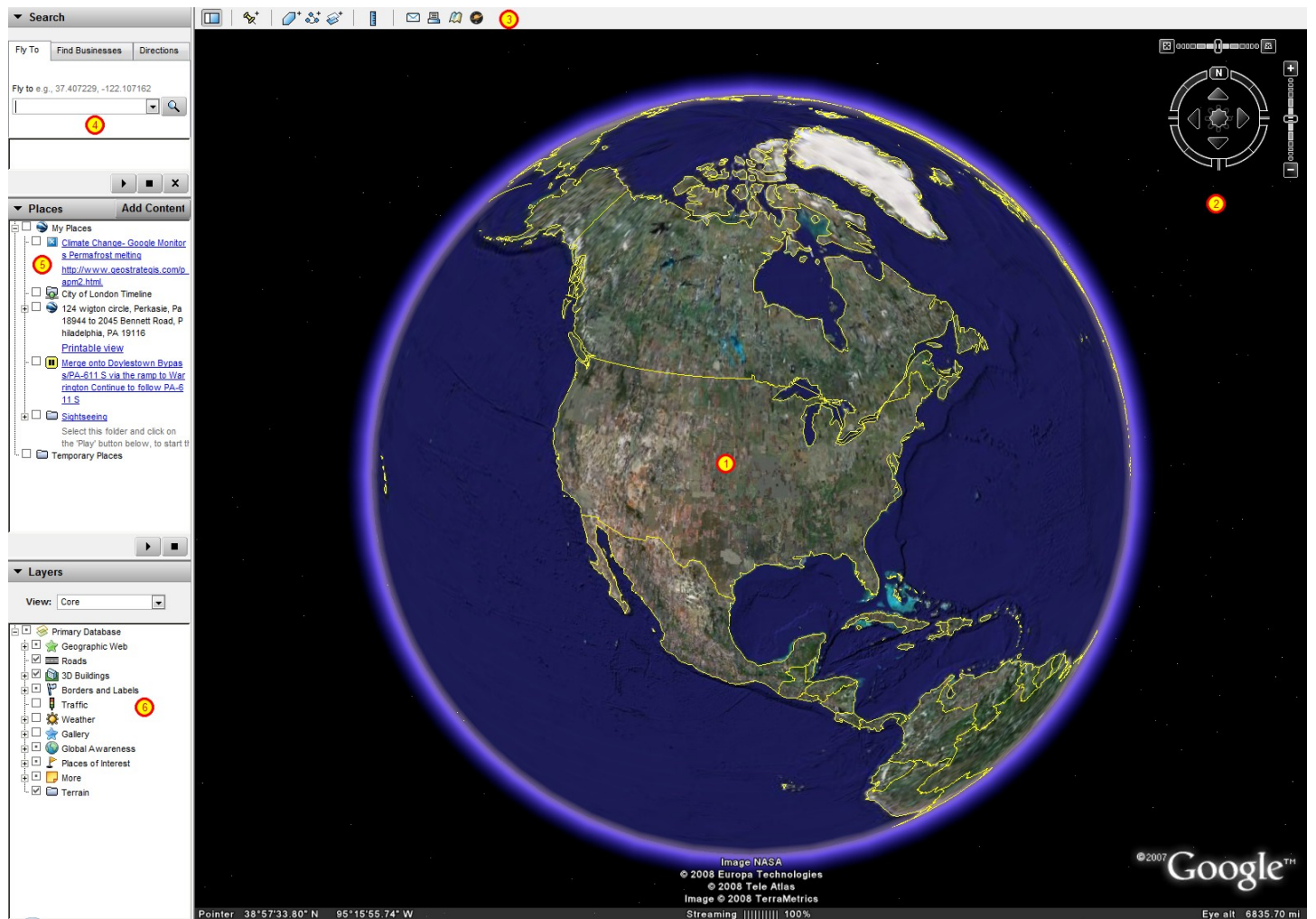


Introducing Google Earth

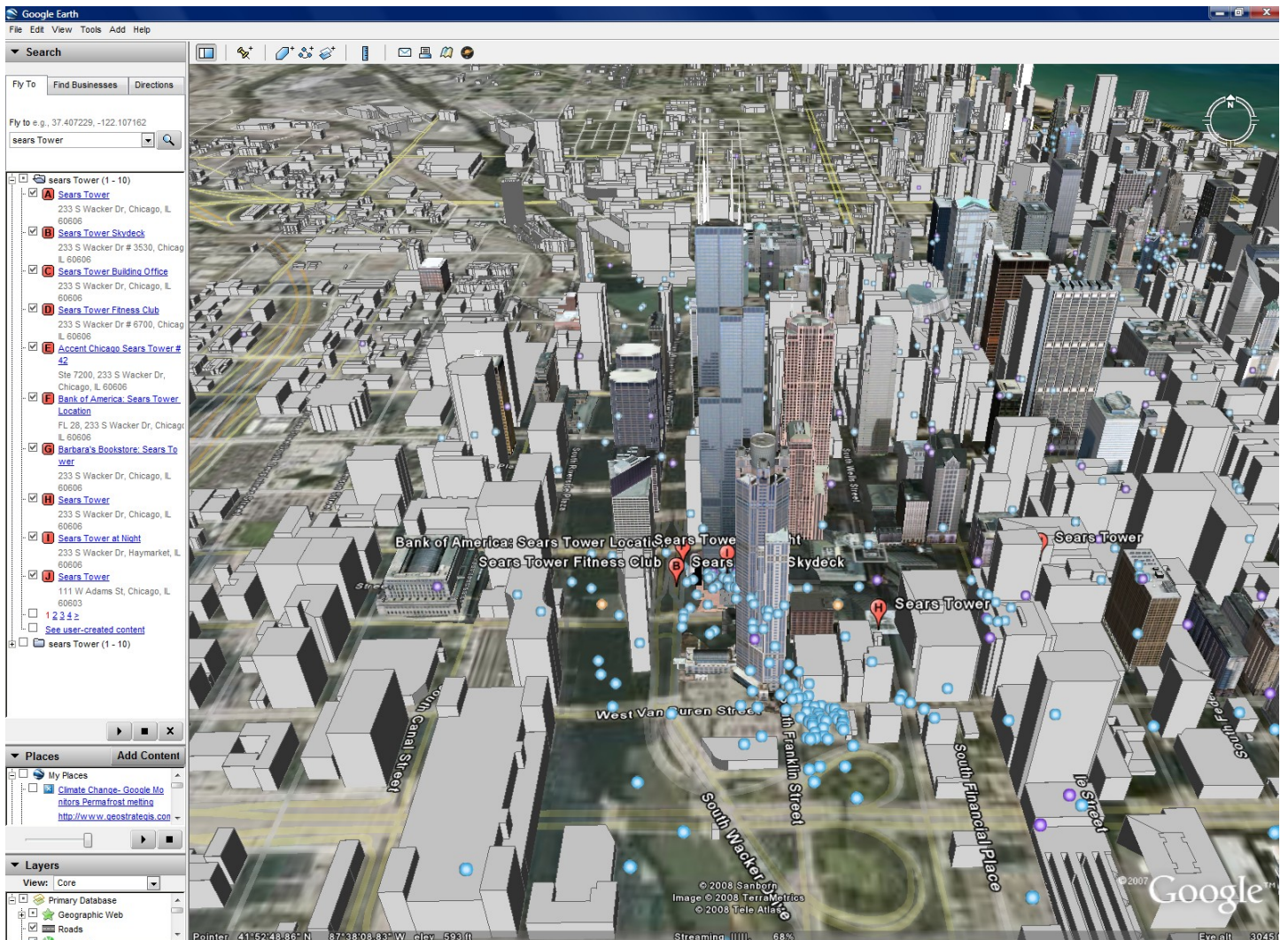
This is a basic primer on Google Earth to acquaint one with the user interface, KML files, and how to make educational use of one of Google's greatest applications.

1. Earth
2. The tools that allow you to travel around the Earth, to change perspective, and zoom in and out.
3. Toolbar (This includes the pin tool and the path tool which we will return to later as well as a link to Google Sky)
4. Search bar. We can type an address, a building name, or coordinates and Google Earth will take us there provided it finds it.
5. Places keeps a list of the places you go as well as KML or KMZ files you download and run.
6. Layers is where you can turn on and off display information on the map including road names, the weather, 3D Buildings etc...




Zooming in on downtown Chicago and the Sears Tower

In this shot we have typed in the "Sears Tower" and have zoomed in on America's tallest building.



Earth.Google.Com

This is Google Earth's home base. In addition to file downloads and updates, Google offers a "Gallery." The KML Gallery (KML stands for Keyhole Markup Language) is the place to go for KMZ files or layers that contain information that can be displayed in Google Earth. This is the first step into turning Earth into an education tool as opposed to a giant spinning map or an application that can drive your directions (see next step for a digression from education).



Explore, Search, and Discover

Change language:

Home

[Downloads](#)

[Product Tour](#)

[Gallery](#)


[Community](#)

[Earth Outreach](#)

[SketchUp](#)

[Help](#)

Google Earth | Free






Google Earth lets you fly anywhere on Earth to view satellite imagery, maps, terrain, 3D buildings and even explore galaxies in the Sky. You can explore rich geographical content, save your toured places and share with others.
[View tutorial](#)

Download Google Earth 4.3


The world's geographic information at your fingertips.

New! Check out the [Earth API](#) and plug-in.


Google Earth 4.3 (beta) features:

-  Photo-realistic buildings from cities around the world
-  Dawn to dusk views with the Sunlight feature
-  Swoop navigation from outer space to street-level

Google Earth | Advanced




Google Earth Pro | \$400
Ideal for an organization, upgrade to Pro to access the ultimate research, presentation, and collaboration tool for location-specific information.
[Learn More](#) | [Case Studies](#) | [Buy](#) | [7-day free trial](#) | [Compare Products](#)



Google Earth Plus | \$20
Upgrade to Plus to add GPS device support, faster performance, the ability to import spreadsheets, and higher resolution printing.
[Learn More](#) | [Buy](#) | [Compare Products](#)

Google Earth | Enterprise Solutions

Enterprise solutions are available for on-site deployment of custom Google Earth databases within your business, public agency, or organization.
[Learn more](#) - [Have a salesperson contact me](#)

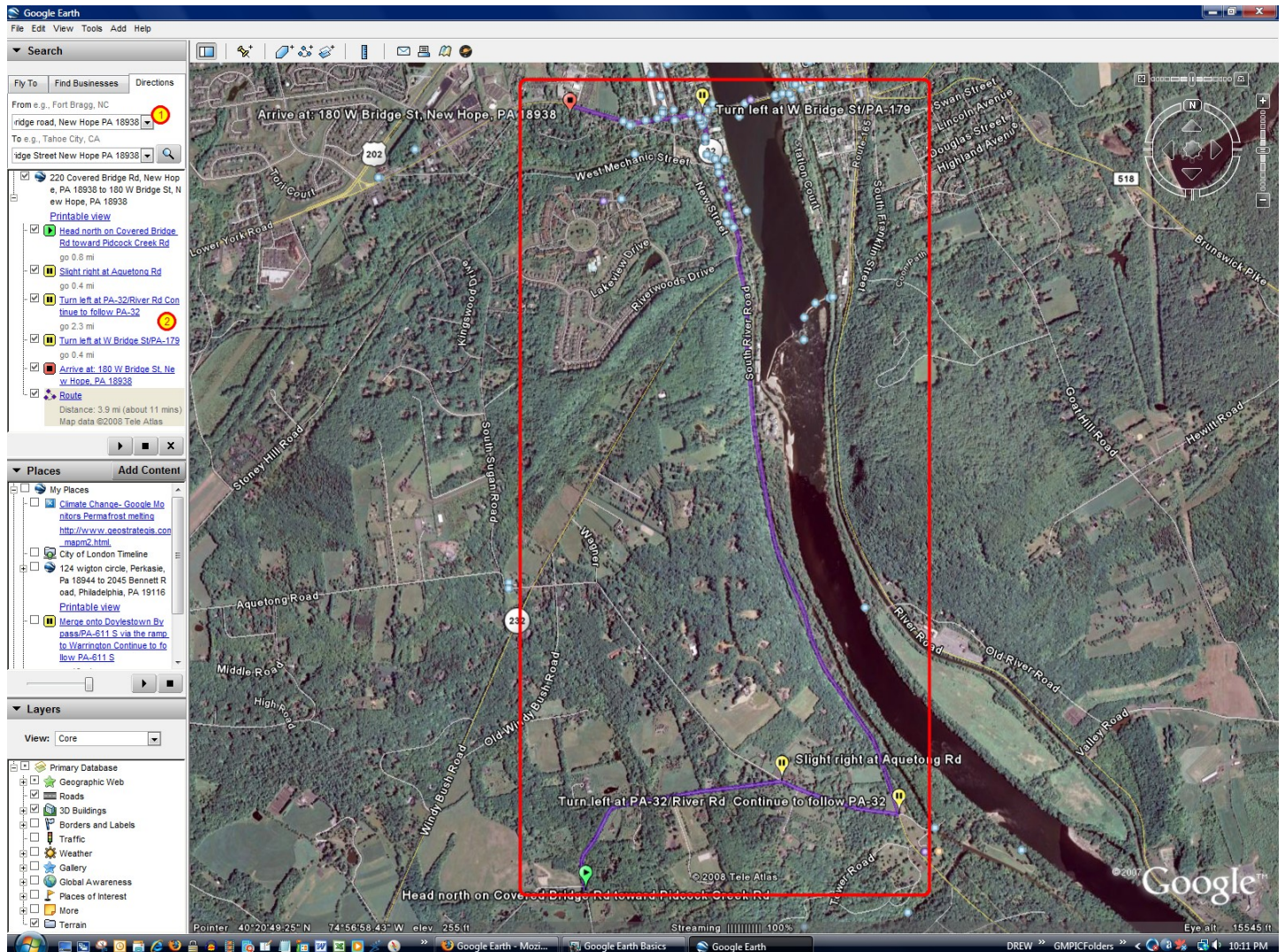


©2008 Google - [Privacy Policy](#) - [Terms and Conditions](#) - [About Google](#)

Google Earth Basics - 4

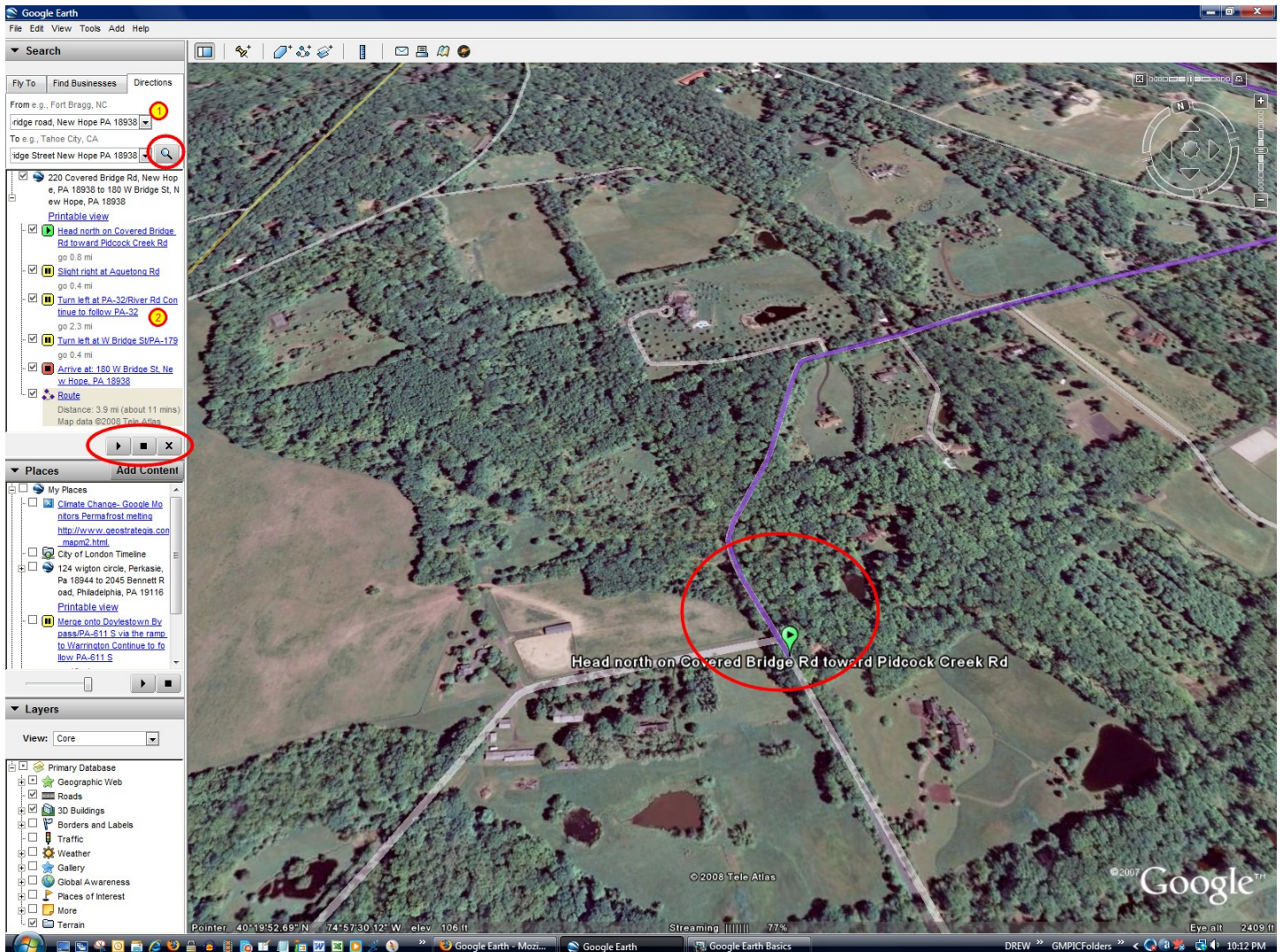
Directions

This is an overhead view of Google Earth giving directions (the math class possibilities are endless).




Google Earth Driving...

Once you have typed in your two destinations and hit the search button, you can click the play button to see the map drive the route.



Back to the KML Gallery

This is the Google Earth Gallery. There are a lot of KML files here. To use one, click on it. The download should begin immediately and your computer should launch Google Earth with the KMZ file layer showing. The next show will show an example of the Darfur layer.



Explore, Search, and Discover

Change language:

[Home](#)
[Downloads](#)
[Product Tour](#)
Gallery
[Community](#)
[Earth Outreach](#)
[SketchUp](#)
[Help](#)


KML Gallery: Explore the Earth on Google

Google Earth is a geographic browser -- a powerful tool for viewing, creating and sharing interactive files containing highly visual location-specific information. We call these files KMLs (for Keyhole Markup Language): what HTML is to regular Internet browsers, KML is to geographic browsers. You can open KML files in both Google Earth and [Google Maps](#), as well as in many other geographic browsers. This KML Gallery contains some interesting examples of KMLs that organizations, communities, and users just like you have created using both Google Earth and the ["Create a map" feature in Google Maps](#).

Check back here each week for new content, add the [KML Gallery Gadget](#) to your iGoogle page, or find even more things to explore in the [Google Earth Community](#). You can also [submit your own KML](#) to be considered for inclusion in the Gallery.

KML Gallery: Explore the Earth on Google


What has the Google Earth creative community been up to lately? Download these files to find out.




Plazes

Using Google Earth to explore places of interest is always fun, but how about exploring people...


[Learn More](#)


 [Open in Google Earth](#)



World Oil Consumption


It's said that about 80% of the world's data has a geographical element. In thi... [Learn More](#)

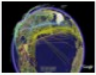
 [Open in Google Earth](#)



Trip Around Asia


This KML presents a photographic tour of Asia. Intrepid explorer, Dan Bauer, spent t... [Learn More](#)

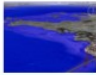
 [Open in Google Earth](#)



International Flights Animation


This KML is one of the most innovative we have come across. Using the... [Learn More](#)


 [Open in Google Earth](#)



Rising Sea Level Animation


This file animates one scary potential effect of climate change -- rising ... [Learn More](#)

 [Open in Google Earth](#)



Football Stadiums of the World

From Old Trafford to the Nou Camp, explore 86 3D Models of football st... [Learn More](#)

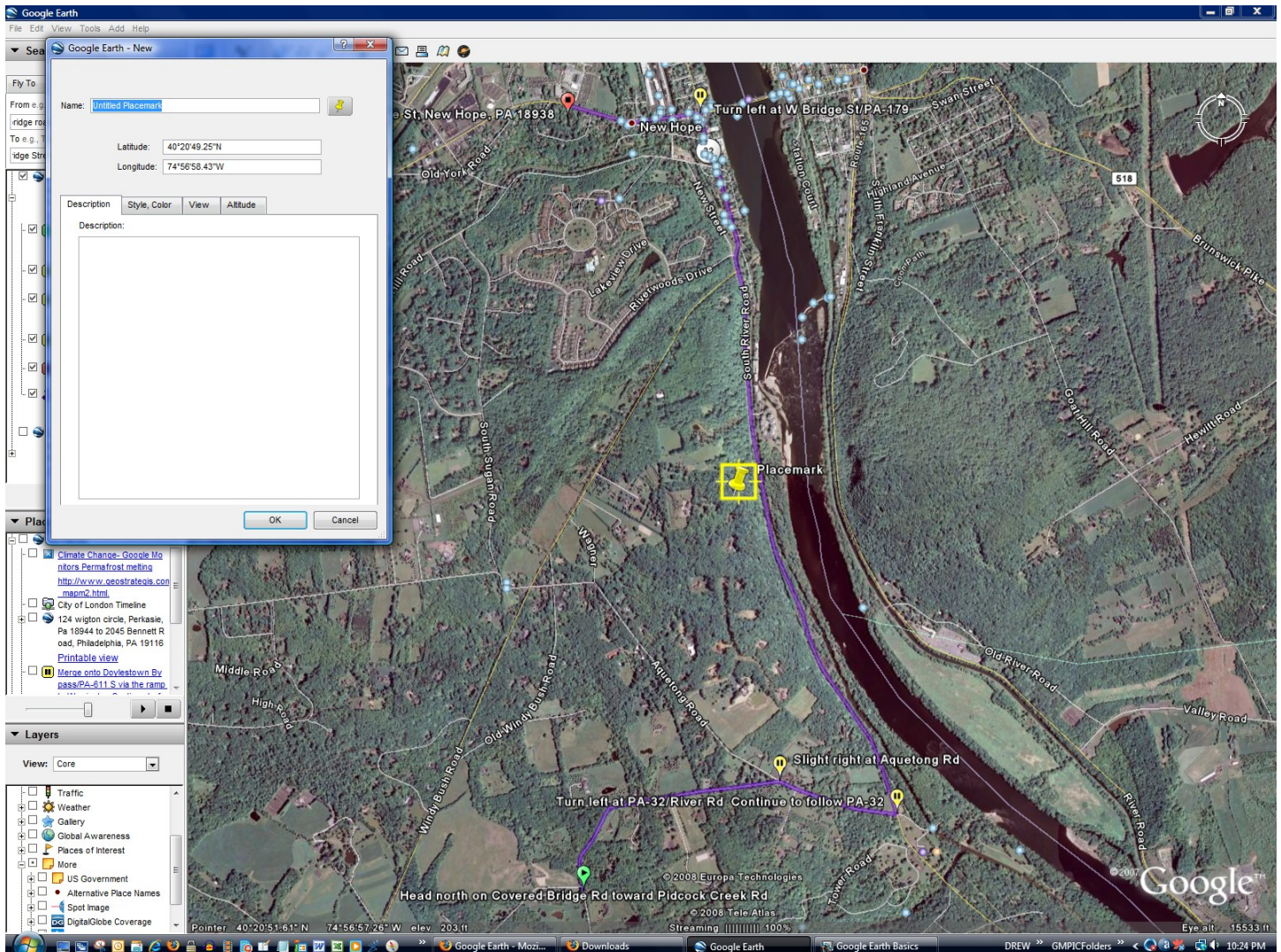
 [Open in Google Earth](#)

[more »](#)

Google Earth Basics - 7

How to enter our own information and make our own KMZ file

After we click on the pin we can enter our own information. The next few screenshots will show the steps.



Adding the Pin and your information

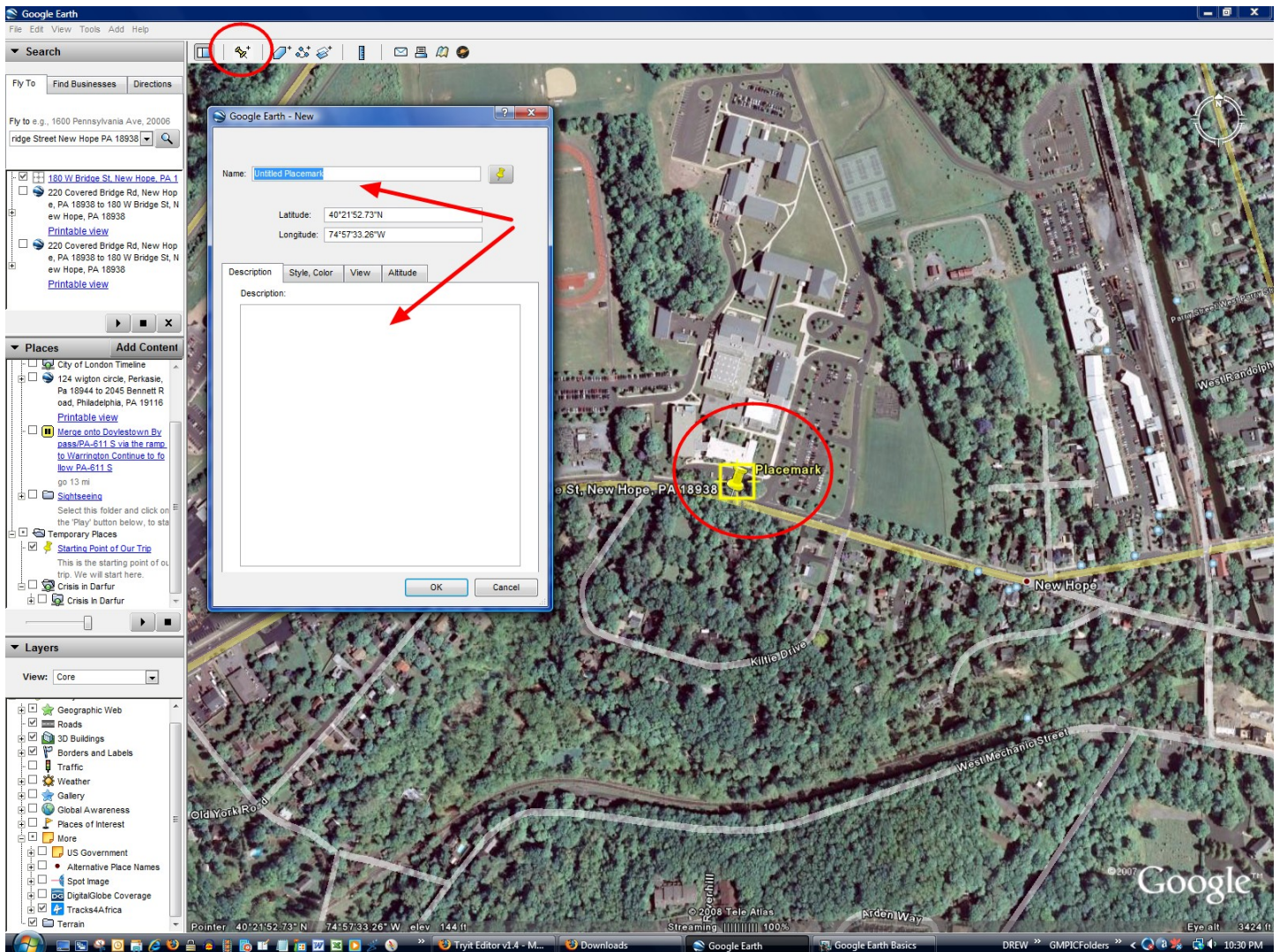
Once you have placed the pin in the location you desire, enter your information about that location. You can even use HTML markup language to control the look and feel.

Some basic markup language:

`<p>creates a paragraph</p>`

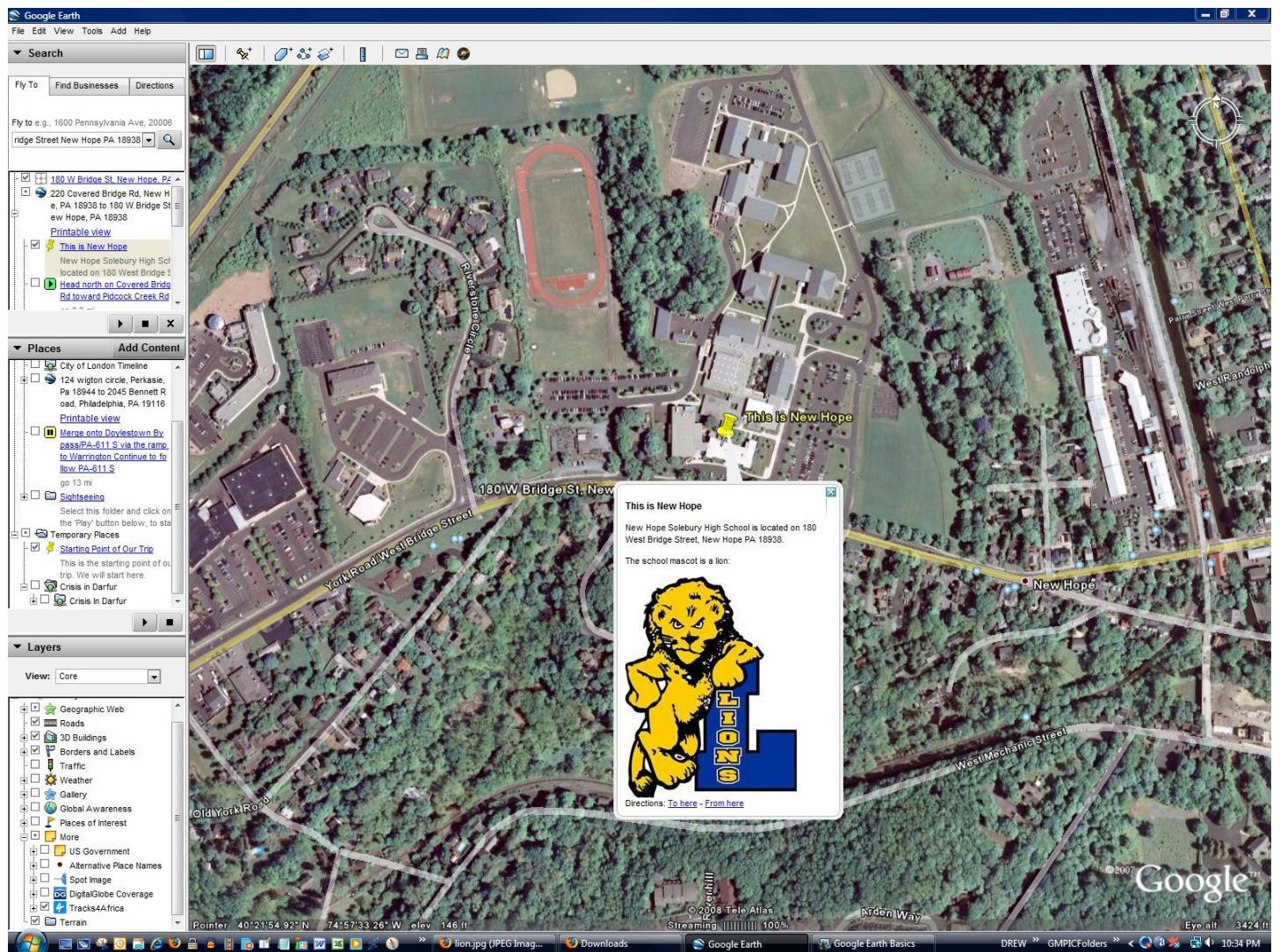
`bolds your text`

To enter an image that is on the web: ``



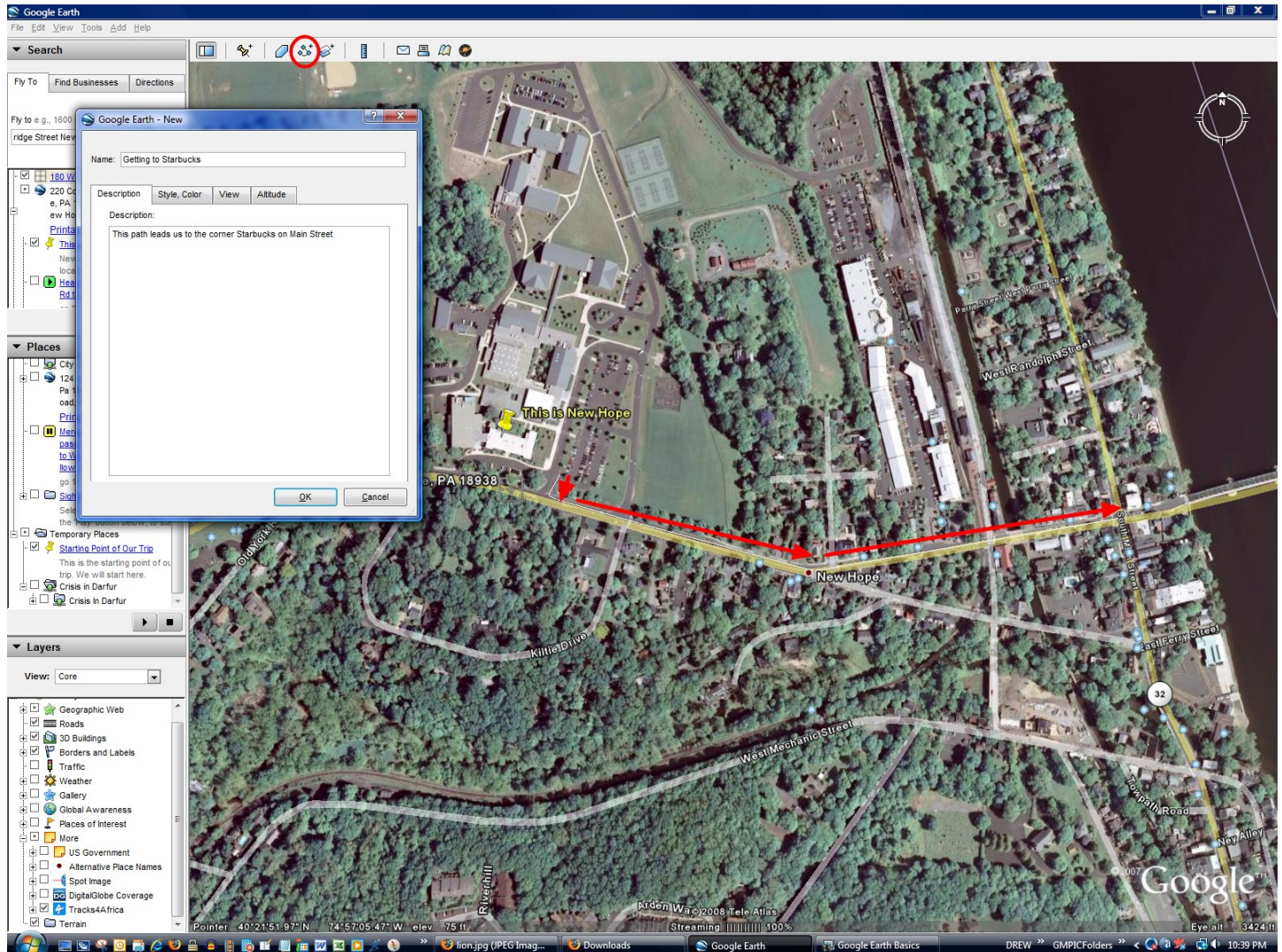
Display your information

You can display your information at anytime simple by clicking on your pin.



Adding a Path

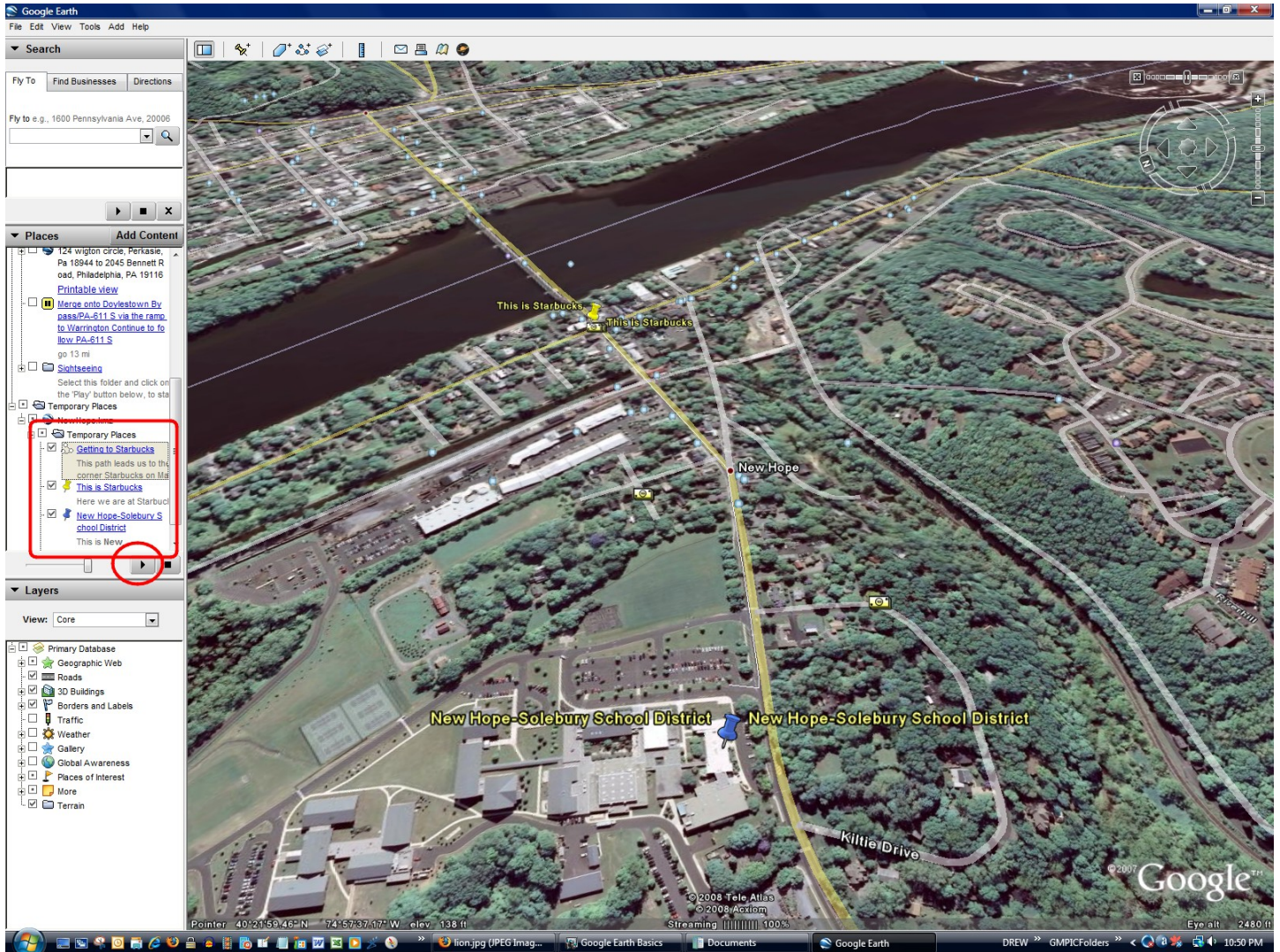
In addition to the pin, you can also add a path to create a tour. This screenshot shows us a path leading to Starbucks. To do this, click on the path tool in the toolbar and draw your path using the mouse. You can draw straight lines between two points by clicking as you go along as opposed to trying to draw it freehand.



Saving the places and driving your path

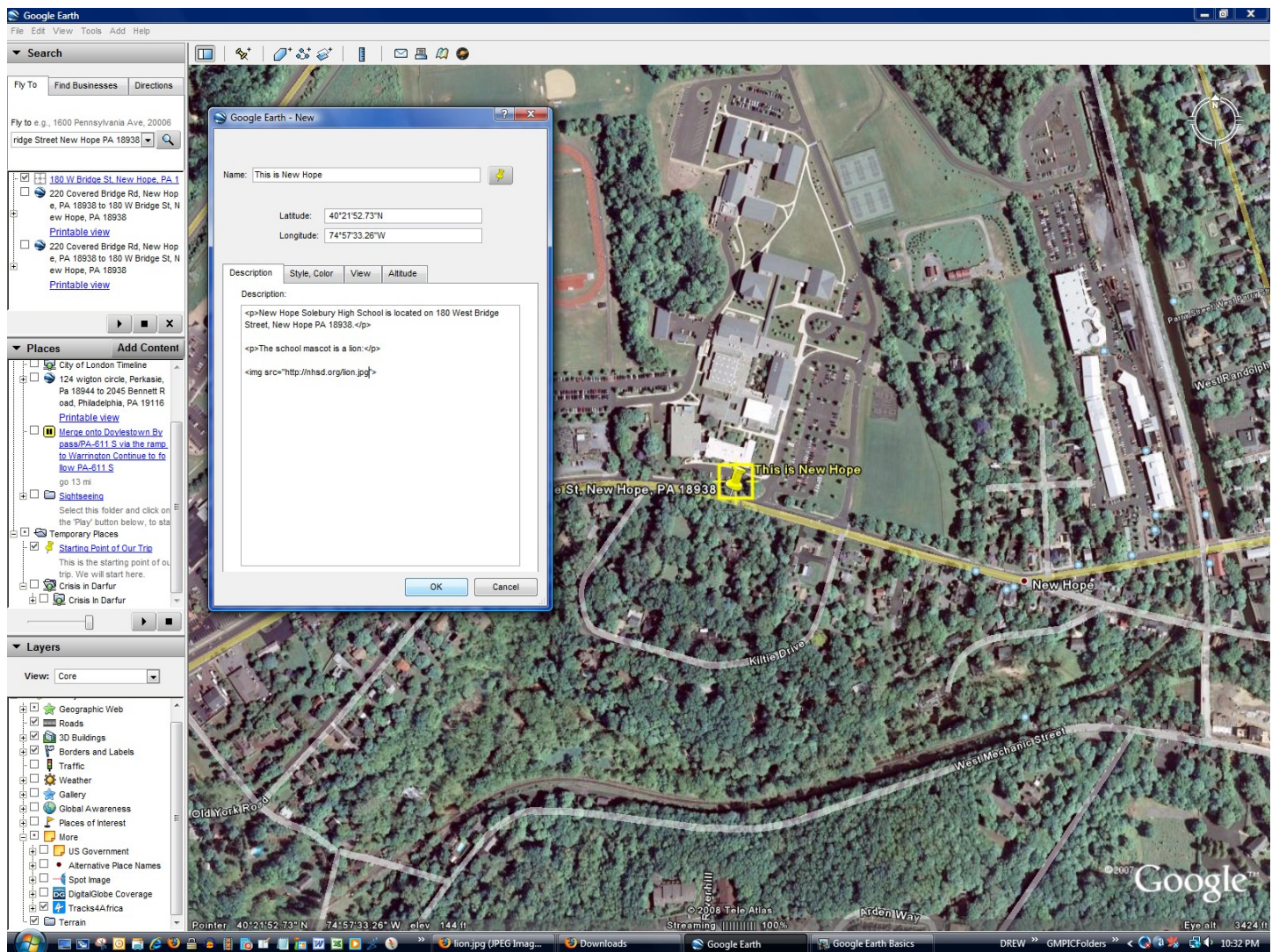
Make sure all your points are checked in "Temporary Places"; click on File-->Save Places As and name your KMZ file.

Once this is completed you can open the file and go to your pinpoints. Remember the play button for driving directions? If you click it after you select your path, it will drive the path for you.



Adding Text and Graphics

The editor



The U.N.'s KMZ file on Darfur

